



5525 Palmerston Cres #36

PRESENTED BY

Jennifer Greenberg, Broker

at Royal LePage Signature Realty, Brokerage

LoewithGreenberg.com



Welcome Home



3



4



2



Townhouse















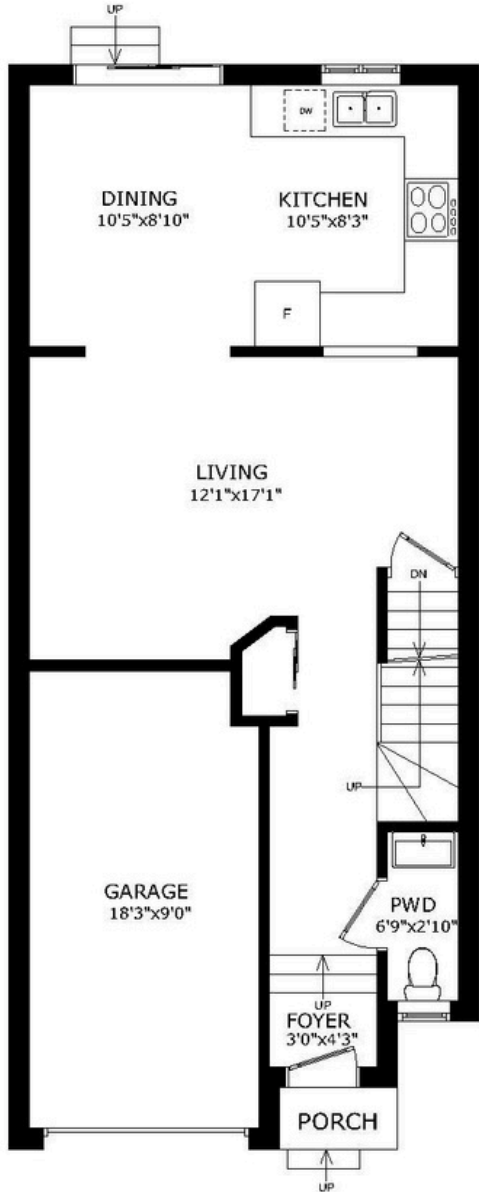




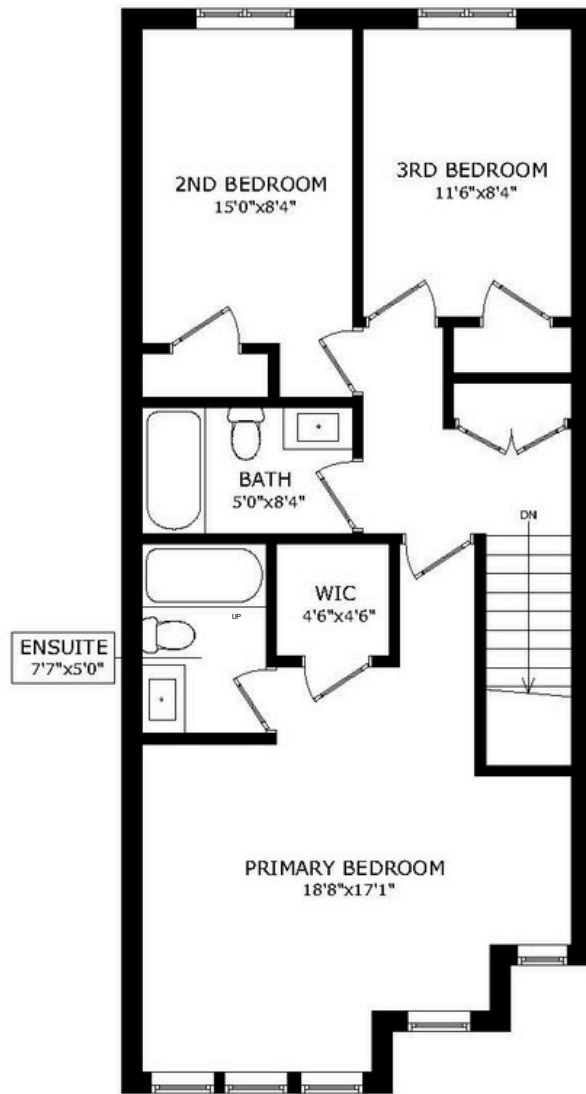




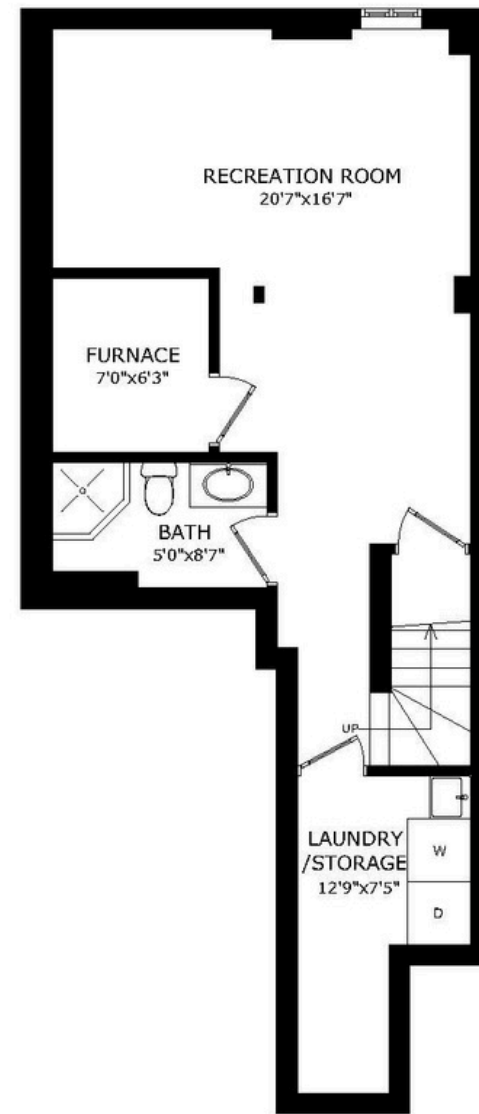




MAIN FLOOR



SECOND FLOOR



BASEMENT

Floor Plan

5525 Palmerston Cres#36

Welcome to 5525 Palmerston Crescent, Unit 36 - a warm and inviting three bedroom condo townhouse offering exceptional value in a quiet, well-established Streetsville community. The main floor features a bright, very spacious living room with plenty of room for gathering, relaxing, entertaining, and creating the big life you've been dreaming of. A separate dining area, well-maintained kitchen, and walkout to a functional outdoor space make everyday living easy and enjoyable, with room to relax, play, or host family and friends. Upstairs, the generously sized primary bedroom serves as a peaceful retreat, complete with a walk-in closet, private ensuite, and extra space to unwind or work from home. Two additional bedrooms provide flexibility for family, guests, hobbies, or a home office. With four bathrooms throughout the home, including a convenient main floor powder room, the layout is designed to comfortably support both everyday living and entertaining. The finished lower level adds a generous recreation room, full bathroom, and laundry/storage area, offering even more flexible space for movie nights, play space, fitness, or work-from-home needs. Complete with an attached garage, private outdoor space, and a functional three-level layout, this home offers the space, comfort, and convenience that are hard to find at this price point. Just a 10-minute walk to the GO station, and close to Streetsville shops, restaurants, parks, Credit River trails, and schools, this is a wonderful opportunity to settle into a low-maintenance home in a sought-after Mississauga neighbourhood.



Don't take our word for it this is what our clients **LOVE** about the area...

Recreation & Green Space

- Loved for its village feel along the Credit River, with pretty walking routes, mature trees, and scenic green space nearby.
- Streetsville Memorial Park is a major local gathering spot, with open parkland, trails, sports facilities, picnic areas, and river access.

Independent Restaurants, Shops and Cafés

- Streetsville has a charming main-street feel, with cafés, bakeries, pubs, casual restaurants, and local favourites along and around Queen Street South.
- People love that it feels less like a typical suburban plaza area and more like a walkable village with personality, patios, and places to linger.

Community and Lifestyle

- Streetsville is loved for its strong sense of community, historic charm, and “small town within the city” feeling.
- With heritage buildings, community events, local businesses, and an active main street, it offers a warm neighbourhood atmosphere that feels distinct from the rest of Mississauga.

Transit & Commute

- The neighbourhood is especially convenient for commuters, with Streetsville GO Station providing a strong connection for travel across Mississauga and into Toronto.
- Easy access to major Mississauga roads, nearby shopping nodes, and surrounding communities makes it practical for families, professionals, and downsizers alike.

LOEWITH GREENBERG & Company

LoewithGreenberg.com
416.879.6325
info@loewithgreenberg.com
686 St Clair Ave W,
Toronto, ON M6C 1B1



Real Estate with a Real Difference

MEMBER OF THE TORONTO REAL ESTATE BOARD All information and statements contained herein, provided by Royal LePage Real Estate Services regarding property for sales, rental or financing is from sources deemed reliable and assumed correct, but no warranty or representation is made as to the accuracy thereof and same is submitted to errors, omissions, changes in price, rental or other conditions, prior sales or withdrawal without notice.