



732 Melton Dr.

PRESENTED BY

Jennifer Greenberg, Broker

at Royal LePage Signature Realty, Brokerage

LoewithGreenberg.com



Welcome Home



3+1



2



4



Bungalow















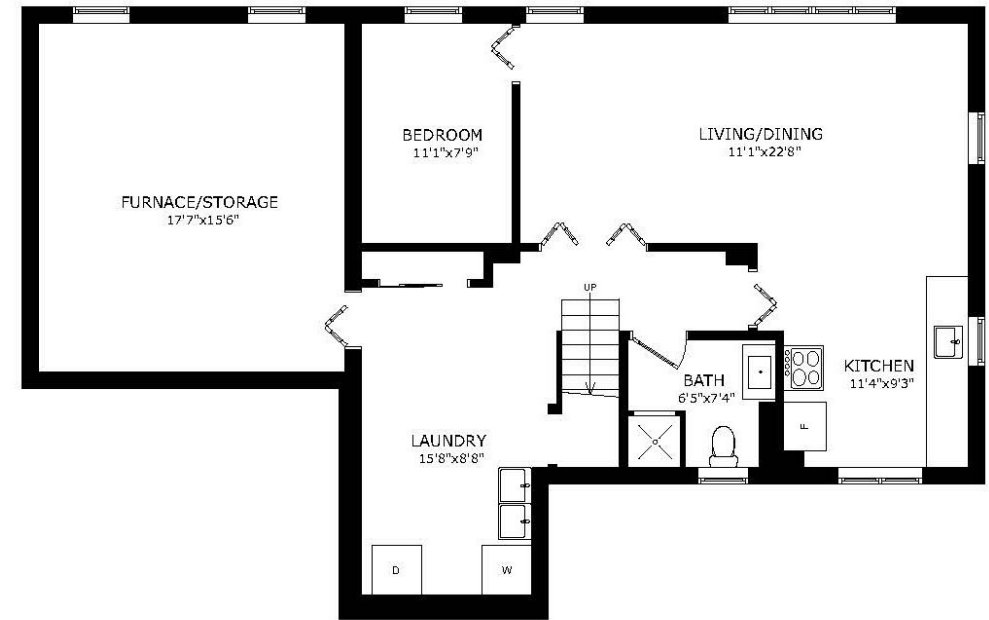
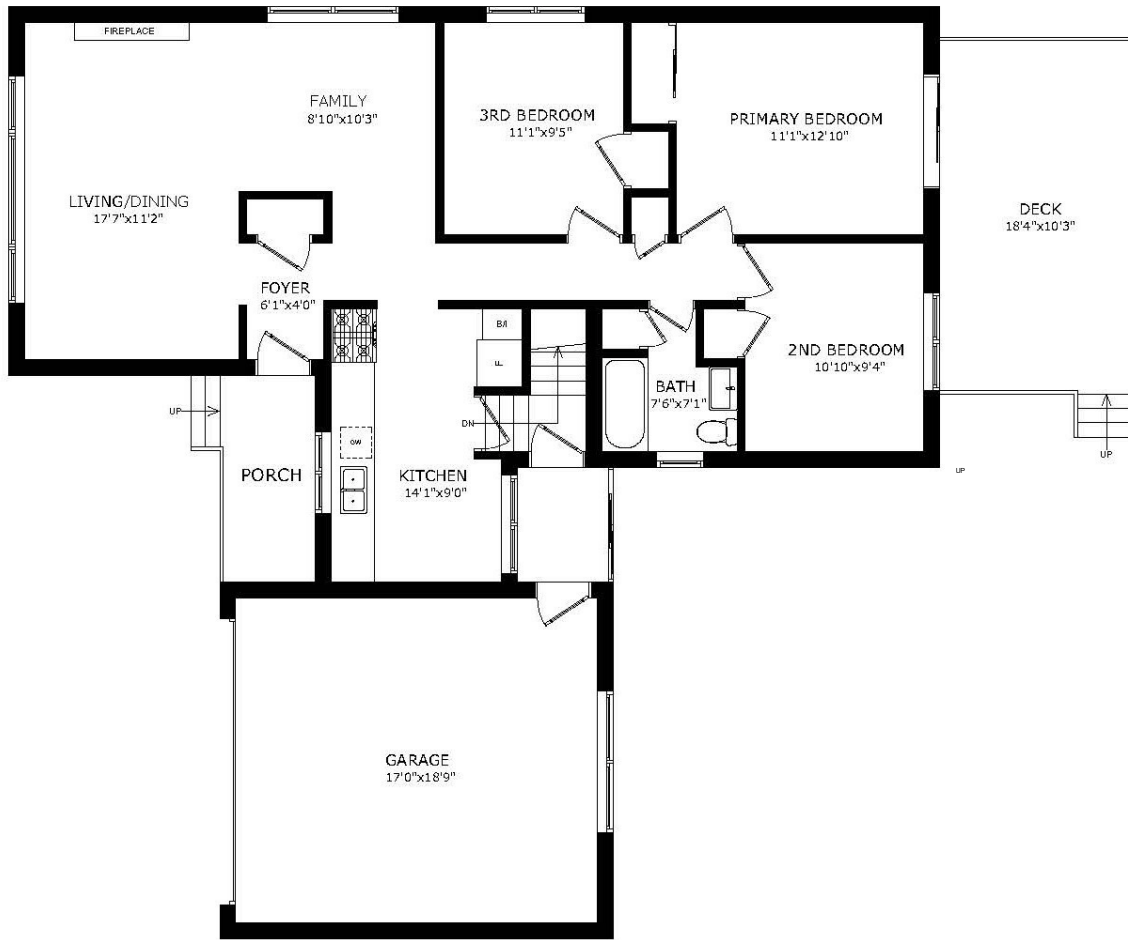












Floor Plan

732 Melton Dr

Welcome to a wonderful opportunity in the heart of Mississauga's cherished Lakeview/Applewood community — a neighbourhood known for its tree-lined streets, multi-generational charm, and roads named after beloved apple varieties.

This lovingly cared-for 3-bedroom brick bungalow sits on an exceptionally large, light-filled lot and is ready for its next chapter. Solid, spacious, and full of warmth, it's the kind of home where memories have been made — and where new ones are just waiting to begin.

The main floor offers bright principal rooms and a functional layout that blends comfort with everyday practicality. Sunlight pours in, creating an inviting space perfect for family life, entertaining, or simply enjoying a quiet afternoon at home.

Step outside and discover the real showstopper — an expansive backyard that feels like your own private retreat. Whether you dream of summer gatherings, a garden oasis, or future expansion, the space is here. The deck provides the perfect setting for barbecues, morning coffee, and long summer evenings.

Downstairs, the finished basement includes a kitchen, bathroom, and bedroom. While dated, it offers flexibility and potential — ideal for extended family, guests, or a creative redesign to suit your vision.

Complete with a 2-car garage and located in a welcoming, established neighbourhood where neighbours stay for generations, this home offers solid bones, pride of ownership, and endless opportunity.

Sometimes patience, perseverance, and persistence pay off. This could be the one.



Don't take our word for it this is what our clients **LOVE** about the area...



Convenience & Lifestyle

- Quick and easy access to local plazas, restaurants, and daily essentials.
- Gyms, medical clinics, wellness studios, and grocery stores are all within easy reach.
- Applewood-Lakeview offers the perfect balance of peaceful residential living, strong community spirit, and unbeatable connectivity to Toronto and surrounding cities.



Commute & Connectivity

- Major bus routes nearby.
- Easy TTC and GO Transit connections to Toronto and the rest of the GTA.
- Great choice for commuters and students alike.



Central Location

- Close to major highways (QEW, 403, 427) — perfect for driving in any direction across the region.
- Quick access to Pearson Airport



Amenities & Recreation

- Close to walking and biking paths along Etobicoke Creek and neighbourhood parks.
- Community centers with pools, rinks, and fitness facilities

LOEWITH GREENBERG & Company

LoewithGreenberg.com
416.879.6325
info@loewithgreenberg.com
686 St Clair Ave W,
Toronto, ON M6C 1B1

ROYAL LePAGE
Signature Realty
IND. OWNED & OPERATED BROKERAGE



Real Estate with a Real Difference

MEMBER OF THE TORONTO REAL ESTATE BOARD All information and statements contained herein, provided by Royal LePage Real Estate Services regarding property for sales, rental or financing is from sources deemed reliable and assumed correct, but no warranty or representation is made as to the accuracy thereof and same is submitted to errors, omissions, changes in price, rental or other conditions, prior sales or withdrawal without notice.