



1455 Lawrence Ave W # 505

PRESENTED BY

Jennifer Greenberg, Broker

at Royal LePage Signature Realty, Brokerage

LoewithGreenberg.com



Welcome Home



1



1



1



Condo







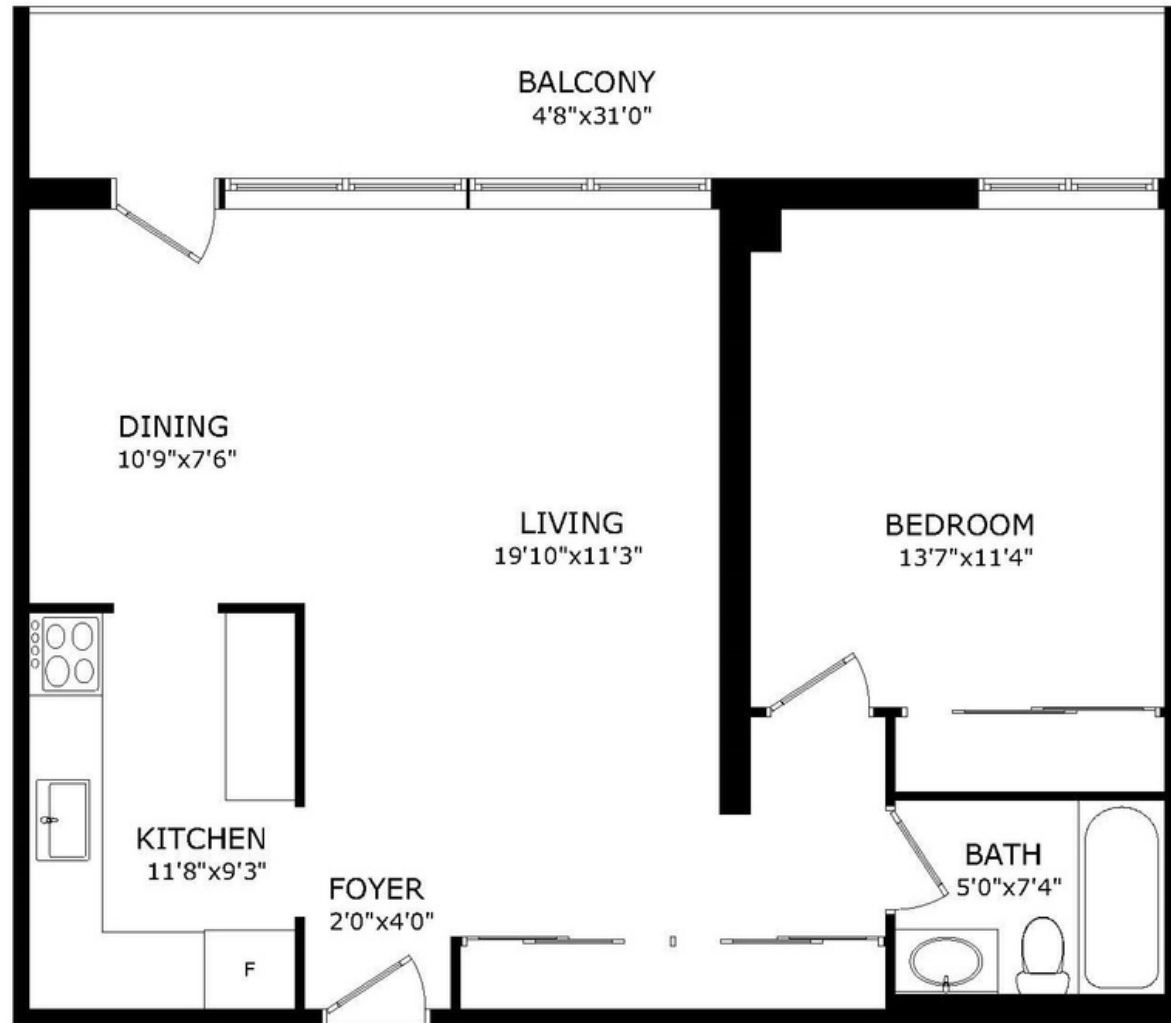












Floor Plan

1455 Lawrence Ave W #505

Spacious, stylish, and move-in ready! This beautifully updated light filled 1-bedroom, 1-bathroom condo offers modern living with stunning north-facing views and a bright, airy feel throughout. Enjoy a sleek renovated kitchen and bathroom, generous living and dining space, and an oversized balcony perfect for morning coffee or evening unwinding. Ideally located at Keele & Lawrence with excellent transit access, easy access to Hwy 401, and just minutes to Yorkdale Mall, grocery stores, local shops, restaurants, and everyday essentials. A fantastic opportunity for first-time buyers or downsizers!



LOEWITH
GREENBERG
& Company

LOEWITH GREENBERG & Company

LoewithGreenberg.com
416.879.6325
info@loewithgreenberg.com
686 St Clair Ave W,
Toronto, ON M6C 1B1



Real Estate with a Real Difference

MEMBER OF THE TORONTO REAL ESTATE BOARD All information and statements contained herein, provided by Royal LePage Real Estate Services regarding property for sales, rental or financing is from sources deemed reliable and assumed correct, but no warranty or representation is made as to the accuracy thereof and same is submitted to errors, omissions, changes in price, rental or other conditions, prior sales or withdrawal without notice.