



# 91 Southill Dr

PRESENTED BY  
**Jennifer Greenberg, Broker**  
at Royal LePage Signature Realty, Brokerage  
[LoewithGreenberg.com](http://LoewithGreenberg.com)



## Welcome Home



3+1



2



1



Townhome





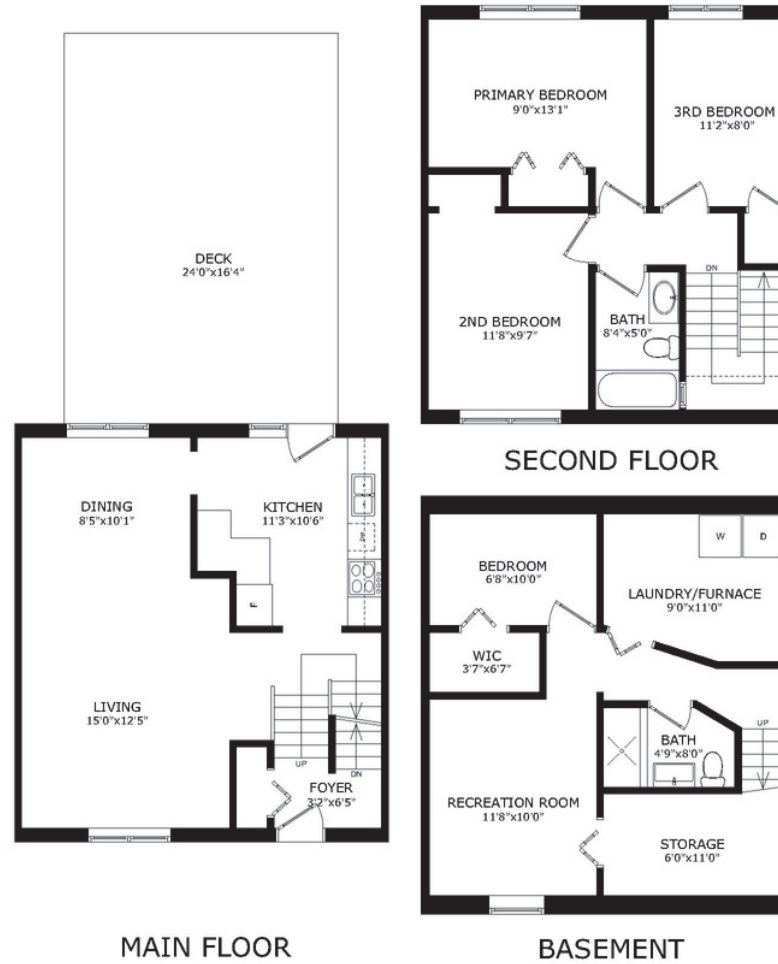








## 91 SOUTHILL DRIVE



SIZE AND LAYOUT ARE APPROXIMATE,  
BUYER TO VERIFY SIZES. WWW.HOUSSMAX.CA

# Floor Plans















# 91 Southill Dr

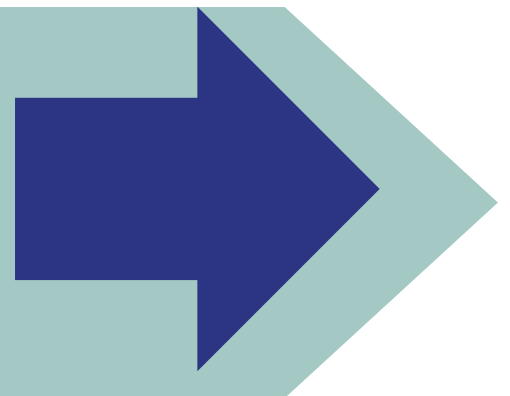


Bright, Stylish & Steps to Shops at Don Mills!

This updated 3+1 bedroom, 2-bath townhouse has all the good stuff—modern finishes, loads of natural light, and a big, private garden with a deck that’s perfect for entertaining. Morning coffees, summer BBQs, catching up with friends—it all happens out here.

Inside, the open-concept layout makes life easy. The living and dining areas are spacious and bright, with plenty of room to spread out, relax, or host a crowd. The kitchen has been fully renovated with smart storage and a clean, modern vibe—totally ready for whatever you’re cooking up.

Upstairs, you’ll find three generous bedrooms, all with their own closets (no fighting over space), plus an updated full bath. Downstairs, the finished basement is a total bonus with a rec room for movie nights, a fourth bedroom (yup, it has a closet too!), a second full bathroom, laundry room, and a great storage area. Seriously—you’ll never run out of space in this well-equipped home. Covered parking keeps your car protected year-round, and the location couldn’t be better—just minutes to the Shops at Don Mills, parks, great schools, and easy transit. It’s comfortable, convenient, and full of charm. A solid find in the heart of Don Mills!





# Don't take our word for it this is what our clients **LOVE** about the area...

- Living so close to The Shops at Don Mills means you have everything you need within walking distance, from fashion and beauty to gourmet dining and wellness services.
- Walk to everyday essentials including Metro and Shoppers Drug Mart just a short walk away.
- Easy access to TTC and GO Transit, making commuting a breeze.
- Surrounded by green space — Wilket Creek Park, Edwards Gardens, and Sunnybrook Park are all nearby.
- Catch up with friends at Danish Pastry House or Demetres.
- Shop all things delicious at Eataly or McEwen's
- Enjoy the best of both worlds with the Don Valley trails at your doorstep, and Bayview Village and Highway 401 just minutes away.
- Nearby some of Toronto's best dining, including Wildfire Steakhouse, The David Duncan House for a classic steak dinner, or Lola's Kitchen for farm-to-table fare.
- Shopping! a wide variety of retailers like Pottery Barn, Williams-Sonoma, and Lululemon, making it a perfect spot to run errands, shop for the home, or update your wardrobe, all within a few minutes' walk.

**LOEWITH GREENBERG**  
& Company

















# LOEWITH GREENBERG & Company

LoewithGreenberg.com  
416.879.6325  
info@loewithgreenberg.com  
686 St Clair Ave W,  
Toronto, ON M6C 1B1



## Real Estate with a Real Difference

MEMBER OF THE TORONTO REAL ESTATE BOARD All information and statements contained herein, provided by Royal LePage Real Estate Services regarding property for sales, rental or financing is from sources deemed reliable and assumed correct, but no warranty or representation is made as to the accuracy thereof and same is submitted to errors, omissions, changes in price, rental or other conditions, prior sales or withdrawal without notice.