



# 145 Ronan Ave

PRESENTED BY

Jennifer Greenberg, Broker

at Royal LePage Signature Realty, Brokerage

[LoewithGreenberg.com](http://LoewithGreenberg.com)



## Welcome Home



3



2



3



Semi-Detached





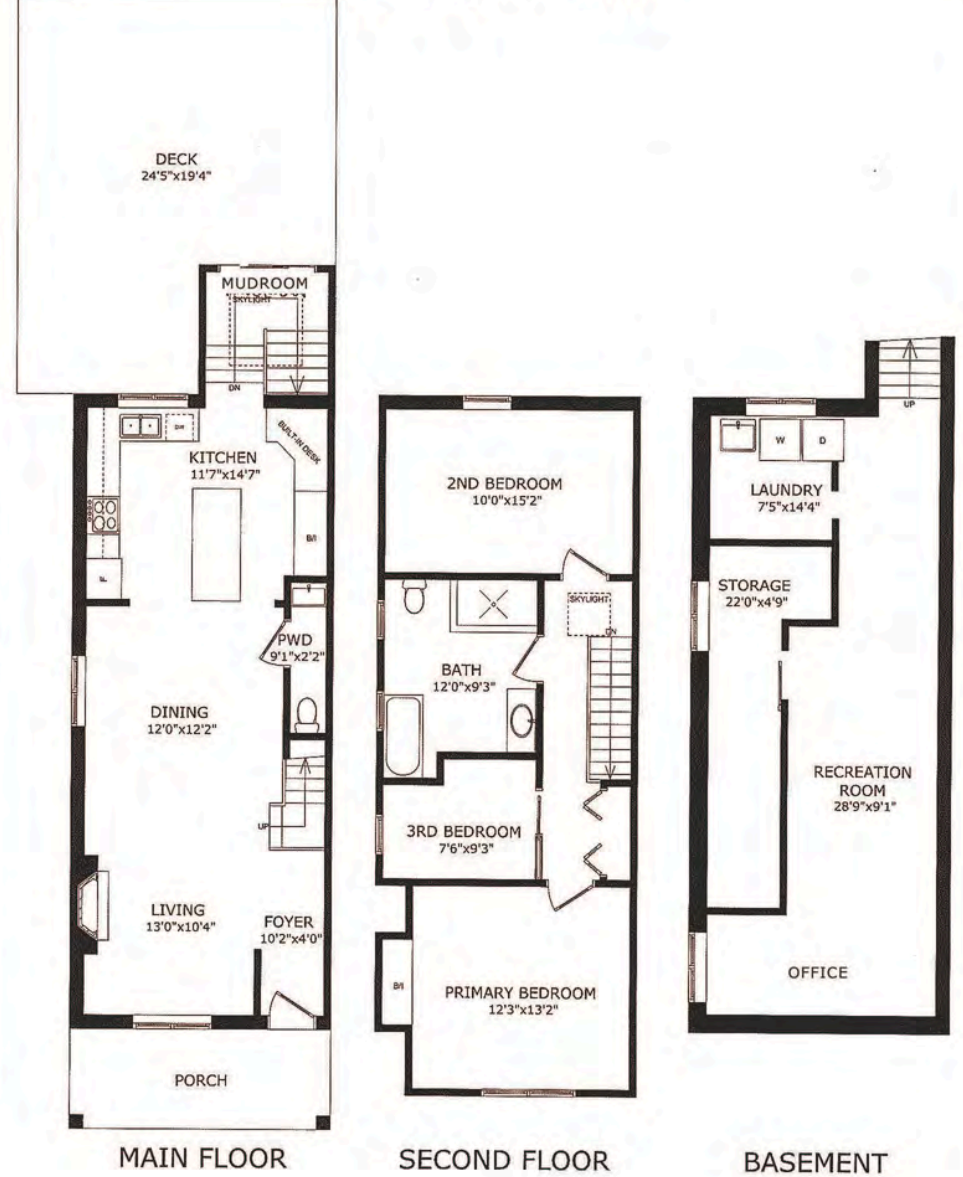












# Floor Plans















# Don't take our word for it this is what our clients **LOVE** about the area...

- An area that has the perfect blend of convenience, community and charm.
- Easy access to the hwy with many routes to take you in to the downtown core. along with super easy travel via public transit.
- Close to so many great shops along Yonge, grab a coffee for the walk at cafes like Brewing Brokers.
- Visit Belly Busters which is acutually a local institution!
- Stop in for something sweet at La Diperie
- A quick walk to the best green spaces — Wanless Park and Bedford Park PS which has some great play spaces.
- Top-notch schools make this area a top pick for growing families.
- A bustling community with tons of options to see and do!
- Make this great area a place you call home.



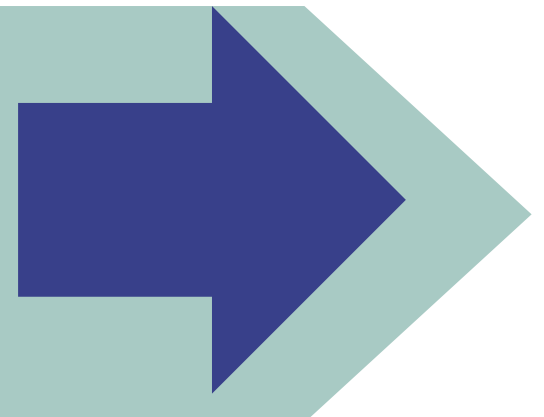
LOEWITH GREENBERG  
& Company



# 145 Ronan Ave



Step into this 3-bedroom charmer and prepare to fall in love! This Lawrence Park Lovely is light-filled with seamless flow from the open plan living and dining areas perfect for entertaining. To the modern chefs kitchen with stone counter tops and stainless-steel appliances with a beautiful view overlooking the yard. Don't forget the main floor mudroom and powder room. Upstairs, you'll find three bright and welcoming bedrooms alongside an oversized family bathroom, complete with a separate tub and shower for a touch of spa-like luxury. The lower level offers something for everyone: an oversized rec room that's perfect for movie nights, a home office setup, or even a home gym or an overnight guest, plus ample storage space to keep life organized. Outside, the deep, treed backyard feels like a cottage getaway right in the city ideal for barbecues, kids adventures, or peaceful mornings with a coffee in hand. And with a private driveway big enough for multiple cars, parking is a breeze. This is the opportunity to take advantage of some of the best schools Toronto has to offer Bedford Park & Lawrence Park, a plethora of nearby parks, superb shops and remarkable restaurants that this dynamic Mid town Toronto neighbourhood has to offer. It all starts somewhere for someone let this be your opportunity. Hurry home!!!! Commuting is a breeze with nearby public transit options connecting you to the downtown core & beyond. Whether you're looking for a quiet retreat or to be close to the action this home offers the best of both worlds in an amazing community













# LOEWITH GREENBERG & Company

LoewithGreenberg.com  
416.879.6325  
info@loewithgreenberg.com  
686 St Clair Ave W,  
Toronto, ON M6C 1B1



## Real Estate with a Real Difference

MEMBER OF THE TORONTO REAL ESTATE BOARD All information and statements contained herein, provided by Royal LePage Real Estate Services regarding property for sales, rental or financing is from sources deemed reliable and assumed correct, but no warranty or representation is made as to the accuracy thereof and same is submitted to errors, omissions, changes in price, rental or other conditions, prior sales or withdrawal without notice.