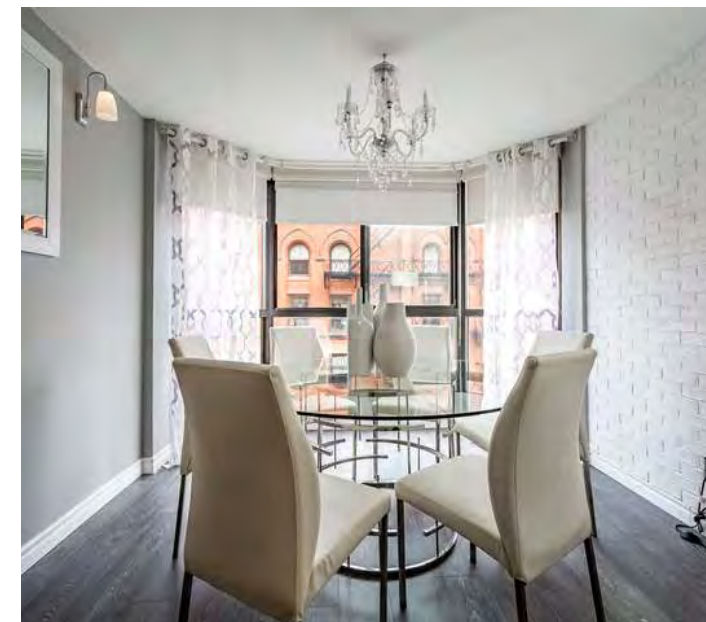




30 Church St. #502








**LOEWITH
GREENBERG
& Company**

PRESENTED BY
Jennifer Greenberg
Broker
Royal LePage Signature Realty, Brokerage
LoewithGreenberg.com



30 Church Street #502

St. Lawrence Market

-  Bedrooms 3
-  Bathrooms 3
-  Taxes/Year \$3,994.04 / 2021
-  Property Type Condo Apt
-  Parking 1 Car Parking

Property Details

Get ready to move on up to this deluxe apt in the sky. Light-filled & spacious with so many sq ft to enjoy!! This is a townhouse with a view!! 2-3 bedrooms depending on your needs, but you will need and want this custom chef's kitchen. You will want to spread out in the great room with its open plan living and dining. Front hall closet and powder room. Outstanding principal bedroom with ensuite, walk-in closet & balcony. Everything you want this condo has! Come and see for yourself!

Take advantage of this outstanding location, access to everything, steps to transit, shopping, and great restaurants - be a local at St Lawrence market. This is a sophisticated city living at its finest. Movin' on up, nothin' can stop you!

LOEWITH GREENBERG & Company

LoewithGreenberg.com
416.879.6325
info@loewithgreenberg.com
686 St Clair Ave W,
Toronto, ON M6C 1B1

ROYAL LEPAGE
Signature Realty
IND. OWNED & OPERATED BROKERAGE



Real Estate with a Real Difference

MEMBER OF THE TORONTO REAL ESTATE BOARD All information and statements contained herein, provided by Royal LePage Real Estate Services regarding property for sales, rental or financing is from sources deemed reliable and assumed correct, but no warranty or representation is made as to the accuracy thereof and same is submitted to errors, omissions, changes in price, rental or other conditions, prior sales or withdrawal without notice.